

# Visual Productions presents NetPanel

Posted on February 26, 2026



Visual Productions presents NetPanel, a refined family of compact 89x89mm networked wall panels that bring intuitive, tactile control to architectural lighting projects.

The E1 encoder, F2 fader and B4 button models mix seamlessly to create custom interfaces for hospitality lobbies, upscale retail, corporate atriums, offices, public spaces, and more.

PoE-powered with premium glass capacitive touch, vibrant RGB LED feedback, haptic response on all elements, and fully programmable via intuitive web interface for color spectrum, CCT temperature and intensity scenes.

They integrate effortlessly with lighting controllers and AV systems through straightforward

network APIs, including plug-and-play synergy with CueCore3.

## **NetPanel**

Wall-mount user-interfaces



The NetPanel series offers a family of elegant, wall-mounted user interfaces designed for intuitive

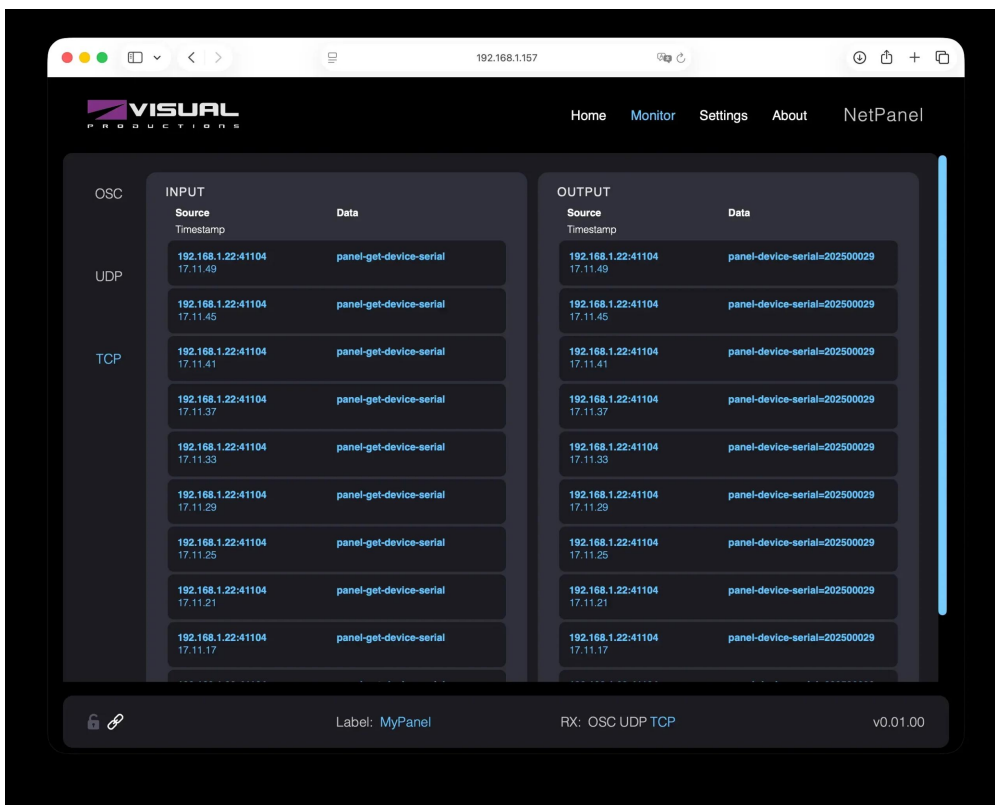
and flexible lighting control and system integration. The range includes a button model, a fader model, and a rotary-encoder model. Mix and match any combination to create the ideal control surface for your next architectural lighting project.

### Control experience



Each panel features a sleek glass finish, capacitive-touch controls, RGB LEDs, and haptic feedback to deliver a smooth and engaging user experience. NetPanels offer a range of predefined control modes tailored for colour spectrum adjustment, CCT temperature selection, and intensity control, easily set-up on your browser, using the device own web-interface. Simply assign the commands or triggers to the desired NetPanel action and define the required RGB feedback. The device adjusts the brightness levels automatically depending on the ambient light.

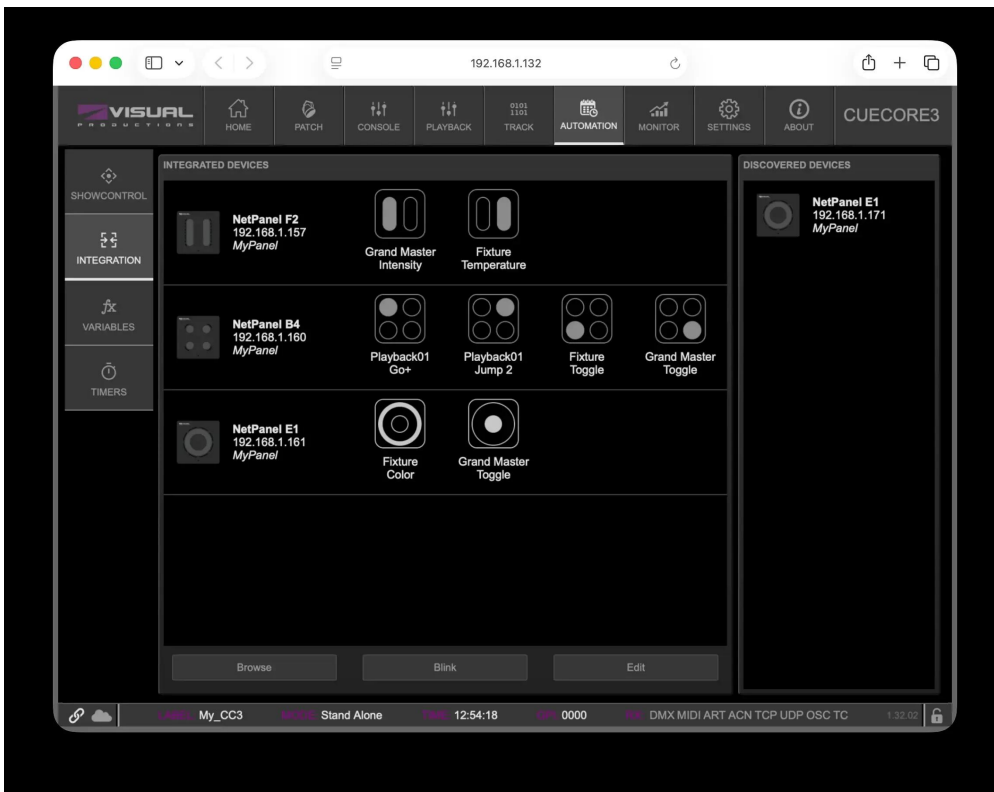
### Fine-tuned control at your fingertips



NetPanels come with their own intuitive configuration interface, giving you live insight into what the device is receiving and sending on the network. You can monitor OSC/UDP/TCP activity, see

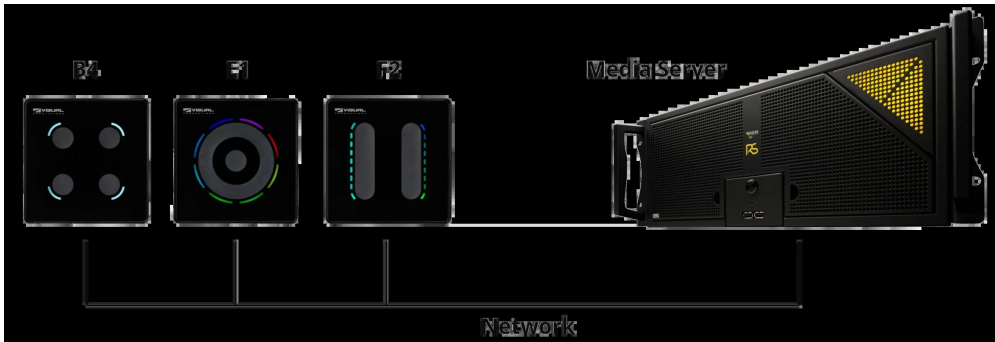
how each control reacts, and fine-tune behaviour without digging through complex scripts. From the same interface you define what every element does — for example setting a fader to control intensity, work as an encoder or adjust colour temperature — and immediately verify the feedback on rings, bars and buttons. This makes commissioning faster, troubleshooting easier and updates far more predictable in real-world projects.

### Plug-'n-play with CueCore3



When paired with the CueCore3, NetPanels provide a true fit-and-forget solution. The panels can be linked directly to internal CueCore3 functions, requiring only minimal configuration for a fully streamlined setup.

### Third-party integration



A straightforward API ensures seamless integration with third-party lighting and AV systems. NetPanels communicate over standard Ethernet protocols such as OSC, UDP, and TCP, allowing easy connection to your primary control system.

### *Venue-ready in few minutes*

Visual Productions presents NetPanel



Installation of NetPanels is straightforward and flexible for most venues. Each unit mounts easily

using the integrated rear magnets, with an additional safety screw at the bottom for secure, permanent fixing. Simply connect an Ethernet cable and power it via PoE, and your NetPanel is up and running in no time.

### **Related products**

- CueCore3 Powerful 4-universe architectural lighting controller
- Specifications
- Ethernet port
- Programming via web-interface
- Capacitive touch
- RGB LED feedback
- Haptic feedback
- Automatic adjustment to ambient light (pending firmware update)
- OSC
- UDP
- TCP
- Power over Ethernet class 1
- Wall mount: Size 89cm x 89cm
- Operating temperature -20°C to +50°C (-4°F to 122°F)
- Compliance EN55103-1 EN55103-2